

Endpoints for Art

Year 3 - Portraiture



What I know and can explain

I can look at different styles of portraiture.

I can draw the features of the face.

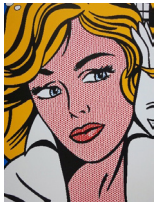
I can draw the face using the correct proportions.

I can trace the face on to cartridge paper.

I can paint a portrait with poster paints.

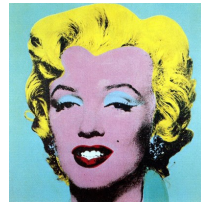
I can create a bold outline in the style of Pop art.

I can blend and shade using paint.



Roy Lichtenstein 1923 – 1997

- American pop artist in the 1960s
- Based on comic books
- Made small pictures large
- Flat colours and lines



Andy Warhol 1928 - 1987

- American pop artist
- Created using many forms of art

Useful Vocabulary

background

blending

bold

comic

consistency

dimensions

duplicate

ellipse

eye line

features

hairline

horizontal

Lichtenstein

outline

pressure

profile

proportion

protrude

realism

recede

reverse

self-portrait

sphere

stylisation

symmetry

transfer

transparent

vertical

Warhol