

# Endpoints for Art

## Year 5 - Painting Natural Forms



### What I know and can explain

I can look at the work and compare the different styles of famous artists who painted natural forms.

I can make an observational drawing of natural forms.

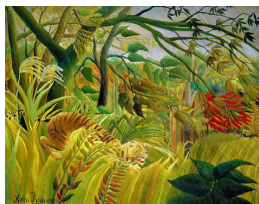
I can enlarge a picture with a viewfinder.

I can shade tonally with poster paint.

I can paint an enlarged picture with accurate detail.

I can explain why I have added detail to selected parts of my painting.

I can assess and improve aspects of my painting.



**Henri Rousseau** 1844–1910

- French post-impressionist
- Self-taught and his work was often described as naïve and simplistic
- Favourite subject was the jungle but he never visited one
- Botanical Gardens in Paris used for inspiration



**Georgia O'Keefe** 1887–1986

- Mother of American modernism
- Enlarged flowers, rocks, animal bones and desert landscapes
- Some of her work is abstract



**Frida Kahlo** 1907–1954

- Mexican artist
- Symbol filled self portraits
- Used images of flowers, monkeys, hummingbirds, dogs and cats in her paintings

### Useful Vocabulary

American  
modernism  
background  
beauty  
blending  
botanical  
close-up  
composition  
cropping  
decorative

detail  
dramatic  
elements  
enlarge  
fantasy  
floral  
focal point  
highlight  
intense  
magnify

naïve  
opacity  
palette  
portion  
primary  
colours  
primitive  
realism  
sculptural  
secondary

colours  
shading  
simplistic  
texture  
tonal  
transparency  
vibrant  
view finder